

HOUSE Lazarus

Princes Street, Doncaster, DN1 3NJ



PRESTIGIOUS OFFICE ACCOMMODATION TO LET

2,874 Sq Ft - 18,364 Sq Ft

A Lazarus development

 **Lazarus**
lazarusproperties.co.uk



Lazarus House occupies a profile position within the centre and is considered to be one of Doncaster's prime office developments.

The premises are ideally situated on the corner of Princes Street and East Laith Gate within Doncaster town centre.

Lazarus House comprises a newly constructed office arranged over five floors, situated in the heart of the town centre.

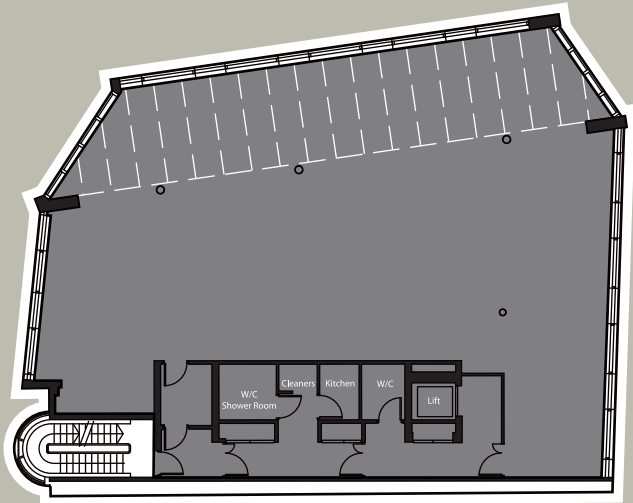
Specification

The accommodation has two entrance points, one direct into the ground floor and one leading into a foyer area, from which there is an option of elevator access to all floors.

Internally, the accommodation has been finished to a high specification to provide the following:-

- Full access raised floors
- Quality carpeting throughout
- Suspended ceilings with recessed LG7 lighting
- Combined heating and cooling
- Secure on site basement car parking
- Lift access to upper floor
- Impressive WC, shower and kitchen areas
- Roof terrace to the fourth floor
- Additional ground level parking if required.

Accommodation & Schedule

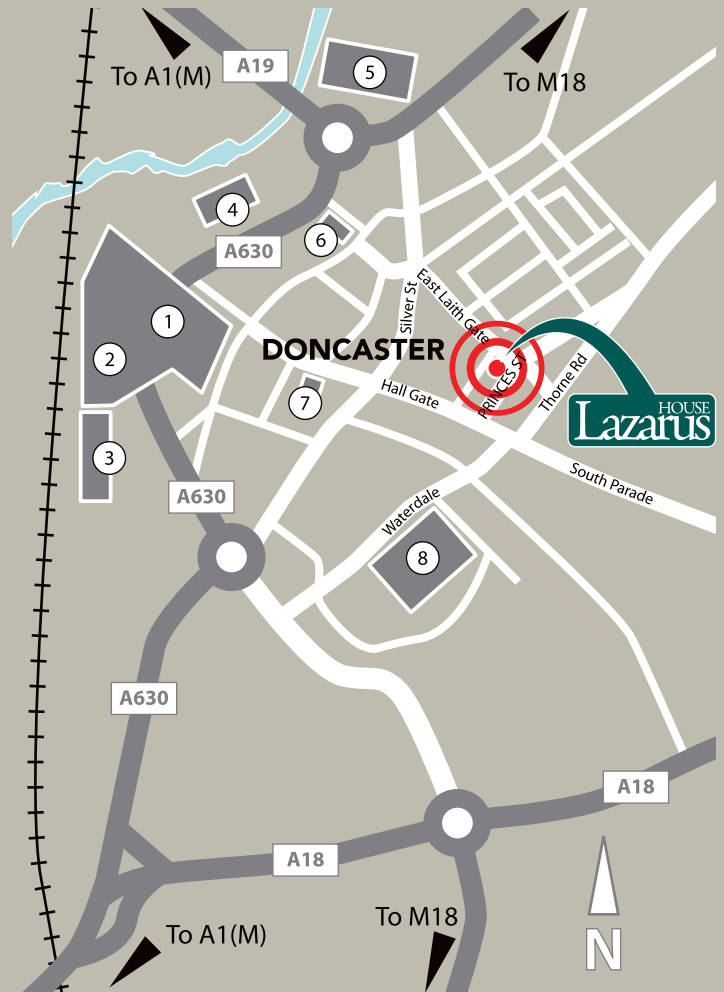


Typical Floor plan indicates the layout of each floor. The white hatch indicates the area of outdoor balcony to the fourth floor.

	Sq M	Sq Ft
Ground Floor	347	3,735
First Floor	370	3,983
Second Floor	370	3,983
Third Floor	352	3,789
Fourth Floor	267	2,874
Total	1,706	18,364

Location

Sat Nav / Postcode: **DN1 3NJ**



- | | |
|-------------------------------|--------------------------|
| 1. Frenchgate Shopping Centre | 5. Doncaster College |
| 2. Transport Interchange | 6. HighFisher View Hotel |
| 3. Railway Station | 7. The Mansion House |
| 4. St George's Minster | 8. New Civic Quarter |

Terms

The accommodation is immediately available to let as a whole or on a floor by floor basis. Alternatively, the accommodation could be made available for sale as a whole.

Rent

On application.

Viewing & Further Enquiries

Please contact Joint Agents:-



Project Part-Financed by the European Union European Regional Development Fund



Important Notice

1. Particulars: These particulars are not an offer or contract, nor part of one. You should not rely on statements by Knight Frank LLP in the particulars or by word of mouth or in writing ("information") as being factually accurate about the property, its condition or its value. Neither Knight Frank LLP nor any joint agent has any authority to make any representations about the property, and accordingly any information given is entirely without responsibility on the part of the agents, seller(s) or lessor(s).

2. Photos etc: The photographs show only certain parts of the property as they appeared at the time they were taken. Areas, measurements and distances given are approximate only.

3. Regulations etc: Any reference to alterations to, or use of, any part of the property does not mean that any necessary planning, building regulations or other consent has been obtained. A buyer or lessee must find out by inspection or in other ways that these matters have been properly dealt with and that all information is correct.

4. VAT: The VAT position relating to the property may change without notice.

Knight Frank LLP is a limited liability partnership registered in England with registered number OC305934. Our registered office is 55 Baker Street, London W1U 8AN, where you may look at a list of members' names.



Rebecca Schofield
rebecca.schofield@knightfrank.com



Jamie Smyth
jamie@lwstates.com